

**NEW** TwinSpin **G**

 **SPINEA**  
EXCELLENCE IN MOTION



**Perfection**  
improved





# TwinSpin **G**

A New Generation of Reduction Gears





About	<b>04</b>
Product	<b>06</b>
Innovations	<b>10</b>
Specifications	<b>17</b>
Contact	<b>24</b>

© SPINEA, s.r.o. 2017. All rights reserved.

Reproduction in part or in whole is not permitted without prior authorization from SPINEA, s.r.o.  
Although maximum care has been taken while preparing this catalogue,  
liability cannot be accepted for any errors or omissions thereof.

Specifications in this catalogue are subject to change for improvement without prior notice.

Edition I / 2017

SPINEA is a modern  
Slovak engineering company,  
involved in the development,  
manufacture and sales  
of high-precision reduction  
gears, sold under  
the TwinSpin brand.

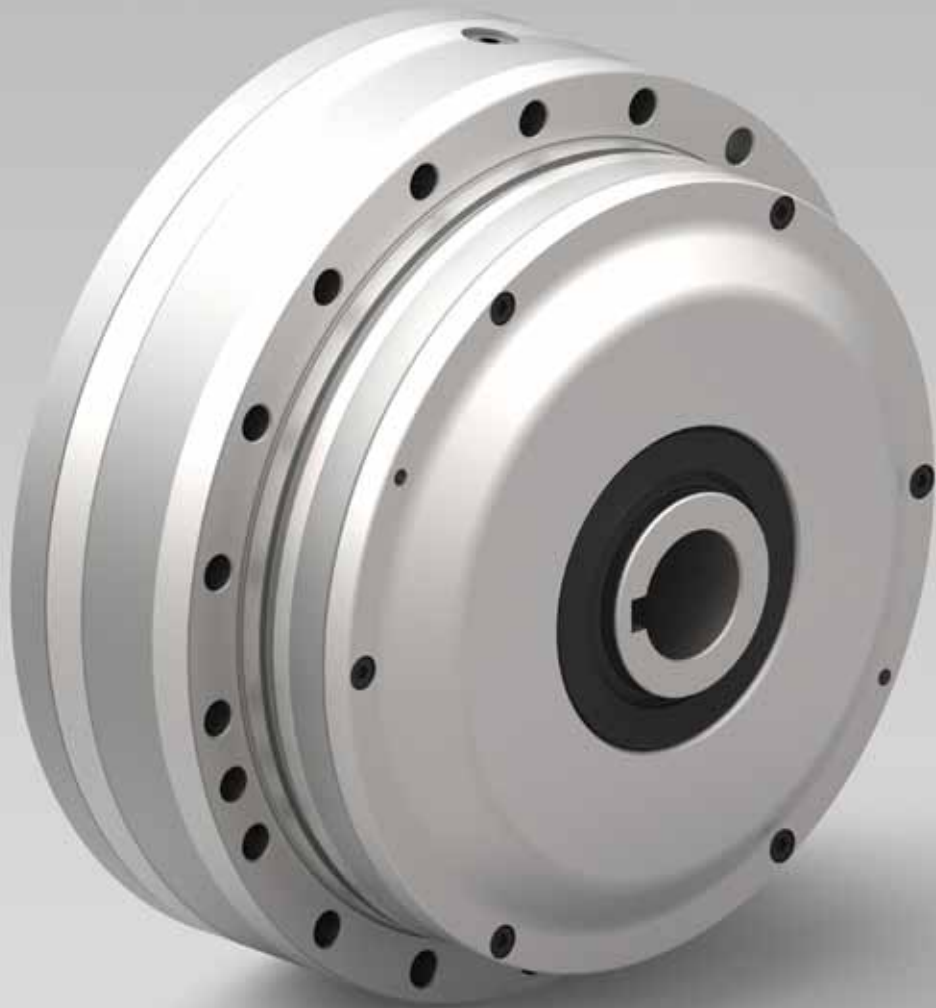




The invention of a new transmission principle was an impulse for the company's establishment in 1994.

The high precision reduction gear TwinSpin belongs to a category of Hi-Tech products and represents a unique technical solution, integrating radial-axial bearings with a high precision reduction gear into a single compact unit.

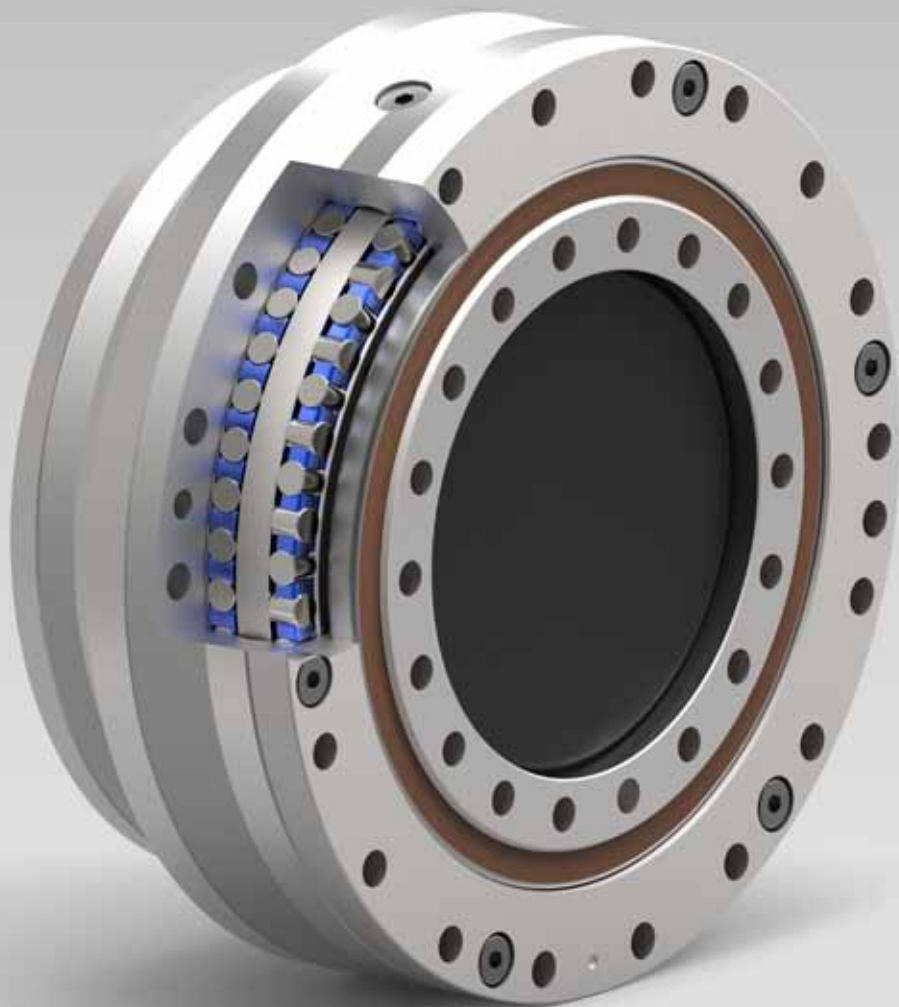
The products of the company are suitable for applications, that require high reduction-gear ratio, high kinematic precision, zero-backlash motion, high torque capacity, high rigidity, a compact design in a limited installation space as well as low weight. They are widely used in automation and industrial robotics, manufacture of machine tools, navigation and camera equipment, medical systems, and many other fields.



# A New Generation of **Reduction Gears**

A new generation of TwinSpin high-precision reduction gears with a new design of the main bearing and improved performance for the most demanding applications.

In the new generation, we have concentrated the results of several years of the development of the reduction gear's design, together with the implementation of the latest manufacturing processes and technologies.



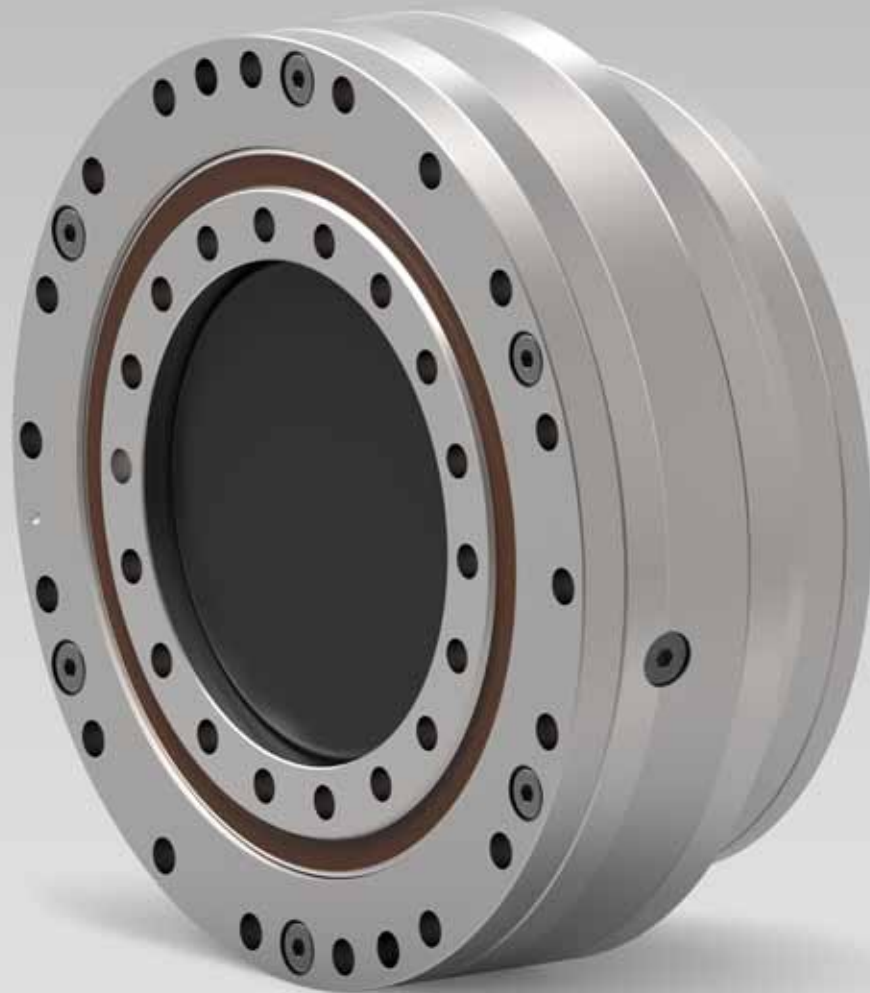




## TS G new series

A new series of the high precision reduction gears with an innovative design of the main bearing system and the TwinSpin reduction principle inside.

It comes in two variants, with sealed output only or as a fully sealed gear for direct connection with a motor.





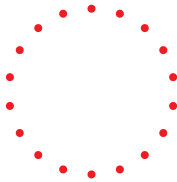
What does the new generation  
of TwinSpin reduction gears bring?





## Torque-to-weight ratio

The new generation of reduction gears brings a remarkable increase in the torque to weight ratio in comparison with the previous TwinSpin design.



## Tilting Stiffness

Compared with the older TwinSpin generation, a double-digit increase in the tilting stiffness of individual reduction gear sizes has been achieved. The new robust design of the main bearing also allows the customization of the parameters of the main bearing to the customer's needs.



## High precision bearing

The main output bearing of the new generation of reduction gears can be manufactured with a very high precision of up to a few microns. Together with high stiffness, this brings cost benefits, especially to the machine tool industry.



## Linearity of torsional characteristics

The high linearity of torsional characteristics, which reaches almost 100 % in the case of the new TwinSpin generation, is a characteristic feature of TwinSpin reduction gears.



## Lower hysteresis / friction

The new design of the reduction gear has brought a significant decrease in hysteresis due to lower internal friction.



## Lower lost motion

The new generation comes with a new optional standard of Lost Motion setting of less than 0,5 Arcmin, even in the smallest gear sizes.



## New reduction gear sizes

They substantially widen the offer, particularly in the area of low and medium torques, compared to the original series.



## Ready to use

The completely sealed variant can be used as a plug-and-play solution. No additional support bearing or sealings are necessary.

## Examples of improvements

### Torque to weight ratio

The new generation of reduction gears brings a remarkable increase in the torque to weight ratio in comparison with the previous TwinSpin design.

↑ + 29%

TS 080 T – torque to weight ratio 47.6 Nm/kg  
TS 085 G – torque to weight ratio 61.48 Nm/kg

↑ + 71%

TS 110 T – torque to weight ratio 32.5 Nm/kg  
TS 115 G – torque to weight ratio 55.81 Nm/kg

## Tilting stiffness

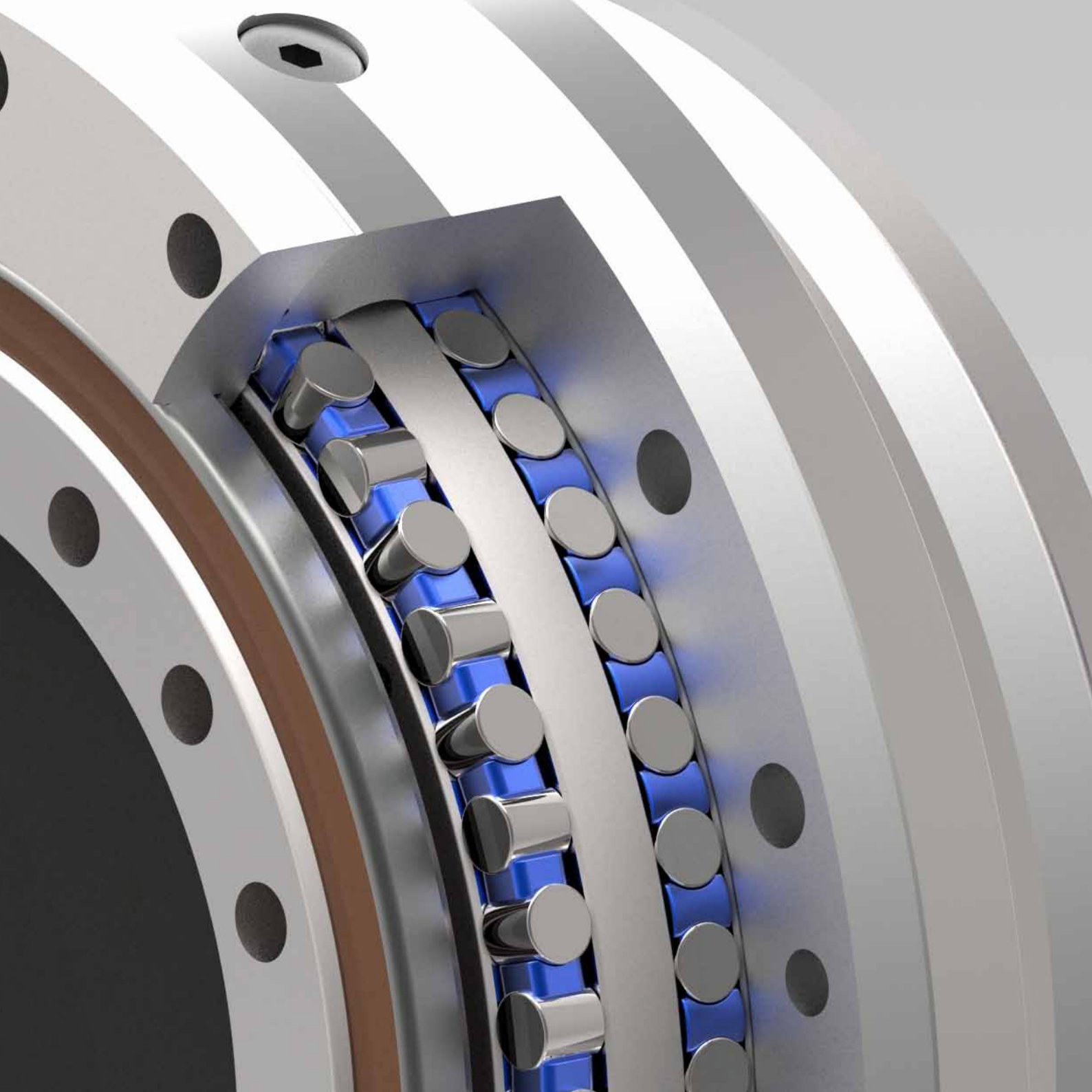
Compared with the older TwinSpin generation, a double-digit increase in the tilting stiffness of individual reduction gear sizes has been achieved. The new robust design of the main bearing also allows the customization of the parameters of the main bearing to the customer's needs.

↑ + 41%

TS 110 E – tilting stiffness 155 Nm/arcmin  
TS 115 G – tilting stiffness 220 Nm/arcmin

↑ + 30%

TS 200 E – tilting stiffness 1300 Nm/arcmin  
TS 200 G – tilting stiffness 1700 Nm/arcmin







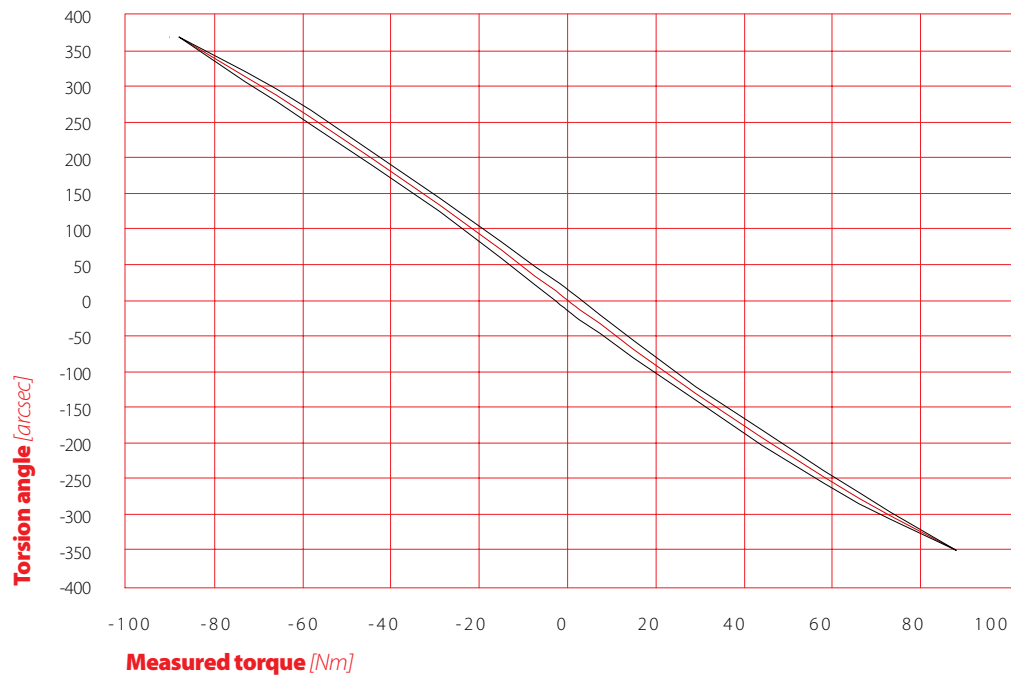
Specifications  
and Drawings

# Specifications

Model	TS 075 G	TS 085 G	TS 085 GL	TS 095 G	TS 095 GL	TS 115 G	TS 135 G	TS 155 G	TS 185 G	TS 225 G	TS115 GHx
<b>Available Ratio</b> [i]	41	<b>33</b>	<b>33</b>	43	43	<b>43</b>	97	53	<b>57</b>	<b>55</b>	69
	<b>63</b>	47	47	73	73	69	135	<b>109</b>	<b>65</b>	<b>69</b>	103
	75	<b>63</b>	<b>63</b>	<b>95</b>	<b>95</b>	103		133	<b>117</b>	<b>137</b>	
		<b>79</b>	<b>79</b>						139		
<b>Rated torque [T<sub>r</sub>]</b> [Nm]	34	75	75	85	85	173	250	450	780	1270	130
<b>Maximum acceleration torque</b> [Nm]	68	150	150	170	170	346	625	1150	1950	3175	260
<b>Rated input speed [n<sub>r</sub>]</b> [rpm]	2000	2000	2000	2000	2000	2000	2000	2000	2000	2000	2000
<b>Torsional stiffness</b> [Nm/Arcmin]	9	11	11	15	15	36	53	92	153	310	23
<b>Tilting stiffness</b> [Nm/Arcmin]	53	65	80	120	140	220	430	920	1300	2300	220
<b>Allowable radial force*</b> [kN]	2	2.2	3.2	3.5	5.1	4	6.6	8.3	9.4	15.2	4
<b>Allowable axial force*</b> [kN]	6.4	6.8	10	11.1	16	12.5	20.5	26.1	29.3	47.4	12.5
<b>Allowable tilting moment</b> [Nm]	190	220	336	410	630	550	810	1640	2300	4380	550
<b>Input inertia</b> [10 <sup>-4</sup> kgm <sup>2</sup> ]	0.019	0.034	0.034	0.12	0.12	0.29	0.71	0.96	1.98	3.2	0.65
<b>Weight</b> [kg]	0.92	1.22	1.7	1.80	2.10	3.05	4.9	8.00	12.6	22	2.70
<b>Hollowshaft diameter</b> [mm]											35

## Hysteresis curve

TS125 GH	TS 155GHx
49	53 109
180	260
450	650
2000	2000
29	67
280	920
4.4	8.3
13.8	26.1
880	1640
1.06	5.6
3.5	6.9
32	55



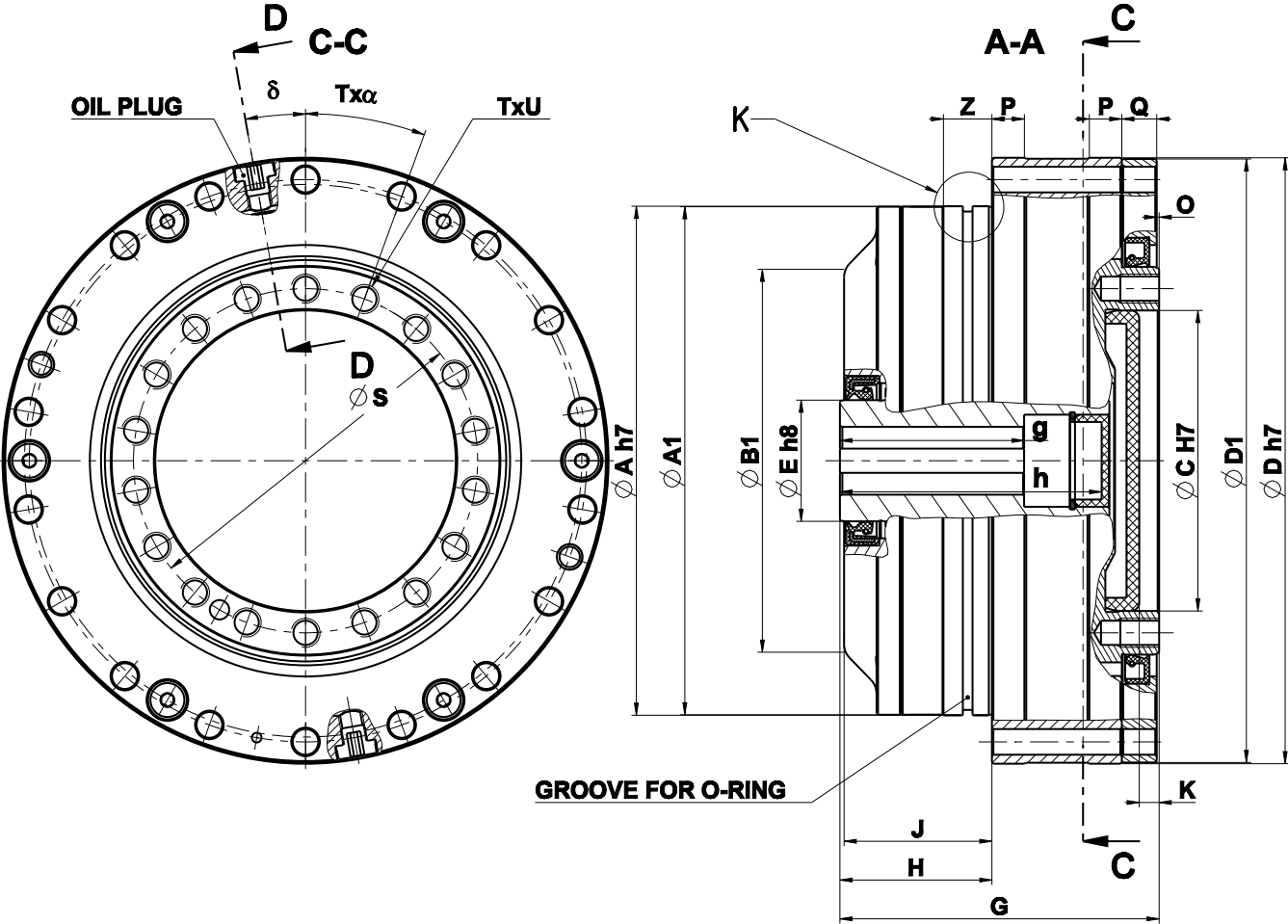
## Measuring protocol of TS 095 G

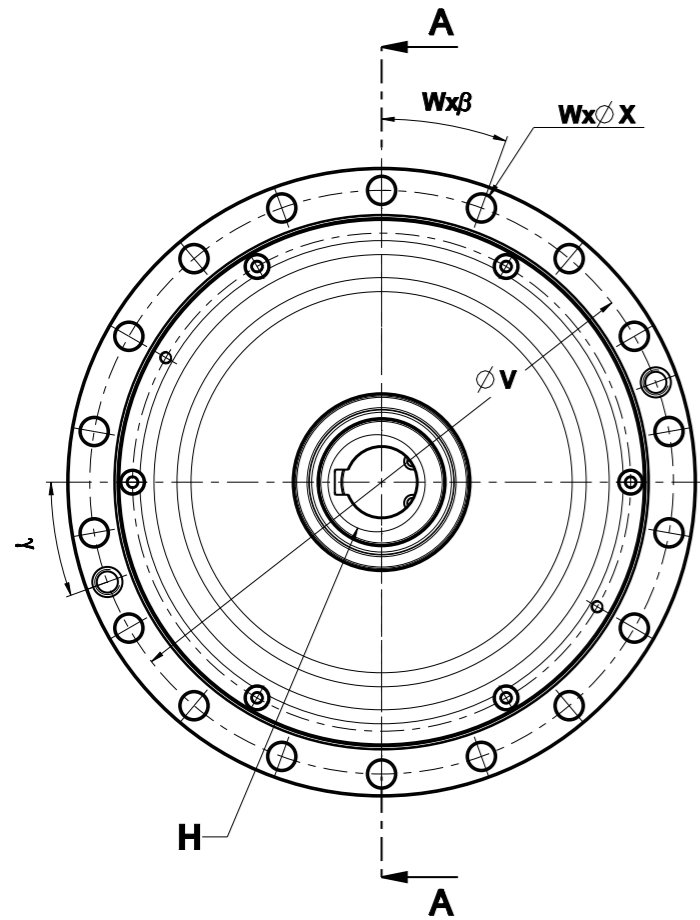
Hysteresis [arcmin]	0,58
Lost motion [arcmin]	0,45
Torsional stiffness at 0 % TR [Nm/arcmin]	11,76
Torsional stiffness at 3 - 50 % TR [Nm/arcmin]	13,83
Torsional stiffness at 50 - 100 % TR [Nm/arcmin]	16,11

Measured values are mean values Nominal life  $L_{10}$ =6000 Hrs.  
Further specifications are available on the customer's request.

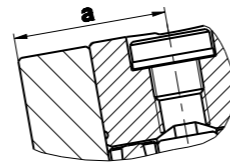
\*Values for output speed  $n_{out}$ =15/min and  $L_{10}$ =12 000 Hrs.

TwinSpin **G** Completely sealed

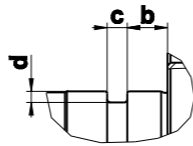




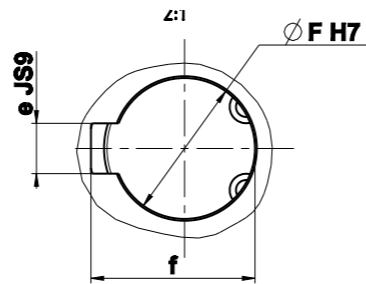
D-D  
2:1



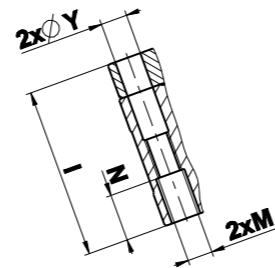
K  
2:1



H  
2:1



E-E



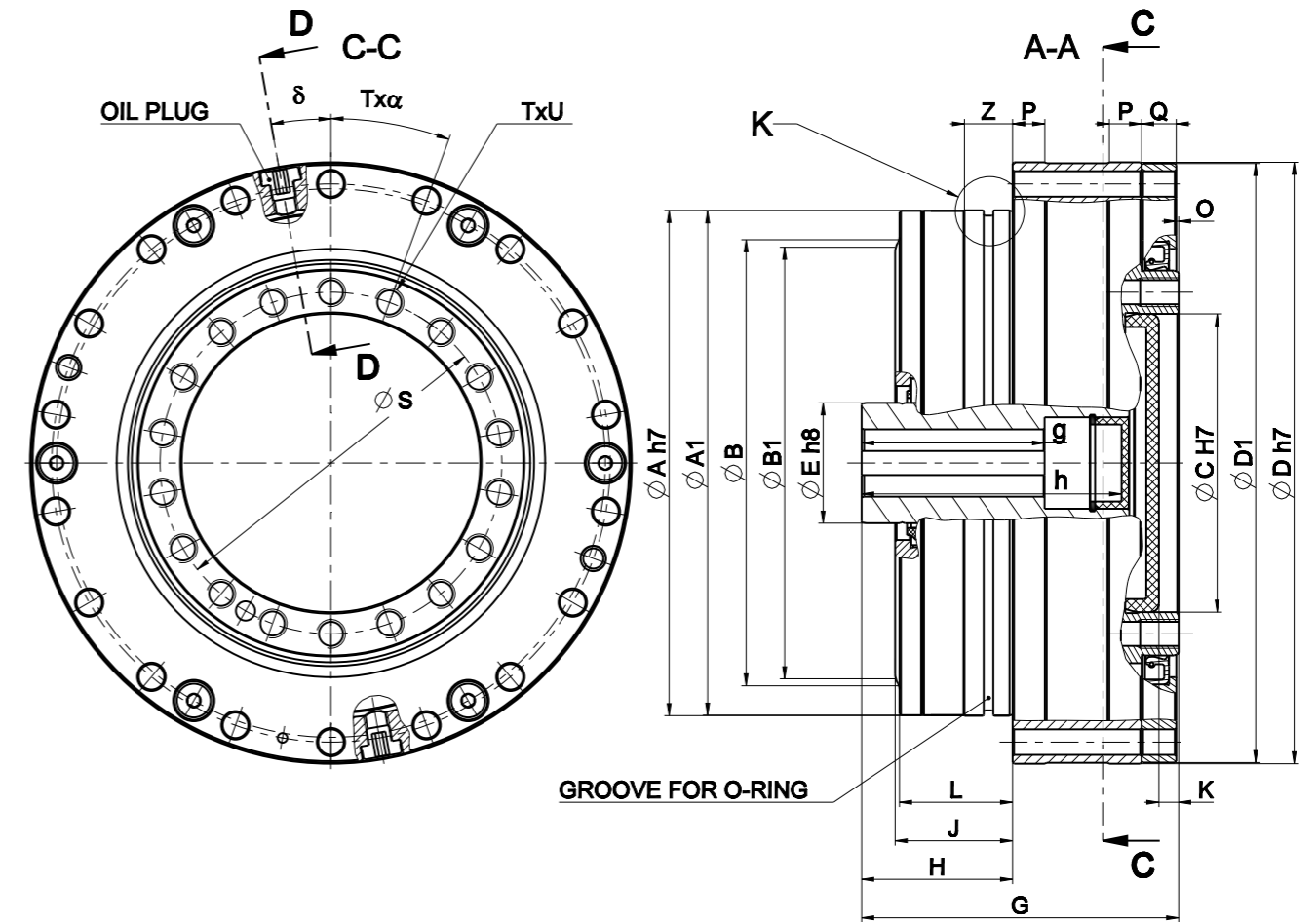
	TS 075 G	TS 085 G	TS 095 G	TS 115 G	TS 135 G	TS 155 G	TS 185 G
ØA h7	63	67	80	100	116	136	161
ØA1	62.8	66.8	79.8	99.85	115.8	135.5	160.5
ØB	57.3	61	71.2	90	102	115	145
ØB1	39.3	45	62	81.7	86.9	107.7	133.4
ØC H7	30	37	45	60	72	90	100
ØD h7	75	84	95	115	136	156	184
ØD1	74.8	83.8	94.8	114.9	135.8	155.6	183.5
ØE h8	15	18	24	25	30	30	38
ØF H7	9	11	14	14	19	19	24
G	46	51.44	58.5	63.5	69.1	79	98.8
H	22.1	24.54	28	28.5	32.2	25.6	49.4
I	23.4	25.9	30	35	36.4	46	48.9
J	21	23.2	23.5	24.7	29.2	30	38
K	2.4	3.1	3	3	4	13.1	5.5
L	12	16.8	15.5	17.4	21.9	25.6	30
M	-	-	-	M4	M5	M5	M6
N	-	-	-	7	9	10	10
O	0.5	0.5	0.5	0.5	0.5	0.5	0.5
P	4.5	5.2	6	7.1	7.25	9.5	10
Q	5.4	5.5	6	6.5	7.4	8	9
ØS	38	44	53	68	82	96	116
T	12	12	18	18	18	18	21
U	M5x7	M5x7	M4x7.5	M5x7.5	M6x8	M8x13	M8x10
ØV	69	76	88	108	126	146	173
W	18	18	18	18	18	28	30
ØX	3.3	4.3	4.3	4.3	5.3	5.3	6.4
ØY	-	-	-	4.2	5.3	5.3	6.4
Z	5	6	7	7	10	10	12
a	10	10.5	13	13.6	15.4	18	18.5
b	1.5	2.1	3	3	4	2.5	6
c	2	2.2	2	2	2.7	4	2.7
d	1.1	1.1	1	1	1.5	2.3	1.5
e JS9	3	4	5	5	5	6	8
f	10	12.8	16.3	16.3	21.8	21.8	27.8
g	16	20	28	38	30	25	44.5
h	31.3	38.5	50.9		56	53	88
α	30°	30°	20°	20°	20°	20°	17.14°
β	20°	20°	20°	20°	20°	12.86°	12°
γ	-	-	-	-	20°	12.86°	54°
δ	10°	10°	10°	10°	10°	6.43°	6°
OIL PLUG	M3	M3	M4	M5	M4	M7	M6
O-RING	60x1.5	65x1.5	76x1.5	92x1.5	110x2	132x3	150x2

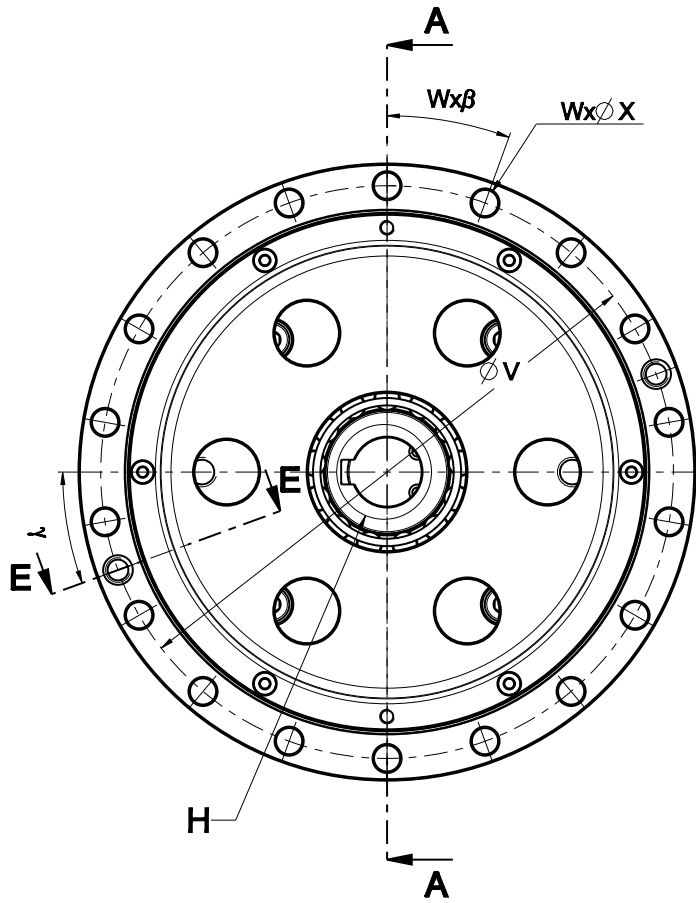
Drawings for high the precision reduction gears TS 85 GL, TS95 GL, TS 225 G and hollow-shaft versions TS 115 GHx, TS125 GH, TS 155 GHx are available on the customer's request.

	TS 075 G	TS 085 G	TS 095 G	TS 115 G	TS 135 G	TS 155 G	TS 185 G
ΦA h7	63	67	80	100	116	136	161
ΦA1	62.8	66.8	79.8	99.85	115.8	135.5	160.5
ΦB	57.3	58.8	69.2	86.4	103.8	115	145
ΦB1	48	48.4	59.5	80	98.3	107.7	137
ΦC H7	30	37	45	60	72	90	100
ΦD h7	75	84	95	115	136	156	184
ΦD1	74.8	83.8	94.8	114.9	135.8	155.6	183.5
ΦE h8	15	18	24	25	30	30	38
ΦF H7	9	11	14	14	19	19	24
G	46	50.45	58.5	63.5	69.1	71.6	98.8
H	22.1	24.4	28	28.5	32.2	25.6	49.4
I	23.4	25.9	30	35	36.4	46	48.9
J	14.7	23.2	18.1	18.9	23.5	24.8	32
K	2.4	3.1	3	3	4	13.1	5.5
L	12	13.8	15.2	17.4	21.9	25.6	30
M	-	-	-	M4	M5	M5	M6
N	-	-	-	7	9	10	10
O	0.5	0.5	0.5	0.5	0.5	0.5	0.5
P	4.5	5.2	6	7	7.25	9.5	10
Q	5.4	5.5	6	6.5	7.4	8	9
ΦS	38	44	53	68	82	96	119
T	12	12	18	18	18	18	21
U	M5x7	M5x7	M4x7.5	M5x7.5	M6x8	M8x13	M8x10
ΦV	69	76	88	108	126	146	173
W	18	18	18	18	18	28	30
ΦX	3.3	4.3	4.3	4.3	5.3	5.3	6.4
ΦY	-	-	-	4.2	5.3	5.3	6.4
Z	5	6	7	7	10	10	12
a	10	10.5	13	13.6	15.4	18	18.5
b	1.5	-	3	3	4	2.5	6
c	2	-	2	2	2.7	4	2.7
d	1.1	-	1	1	1.5	2.3	1.5
e JS9	3	4	5	5	5	6	8
f	10	12.8	16.3	16.3	21.8	21.8	27.8
g	16	20	28	38	30	25	44.5
h	31.3	38.5	50.9	55.6	56	53	88
α	30°	30°	20°	20°	20°	20°	17.14°
β	20°	20°	20°	20°	20°	12.86°	12°
γ	-	-	-	20°	20°	12.86°	54°
δ	10°	10°	10°	10°	10°	6.43°	6°
OIL PLUG	M3	M3	M4	M5	M4	M7	M6
O-RING	60x1.5	65x1.5	76x1.5	92x1.5	110x2	132x3	150x2

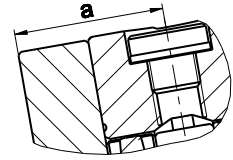
Drawings for high the precision reduction gears TS 85 GL, TS95 GL, TS 225 G and hollow-shaft versions TS 115 GHx, TS125 GH, TS 155 GHx are available on the customer's request.

## TwinSpin G Sealed output

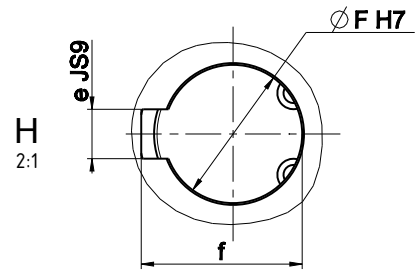
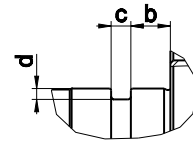




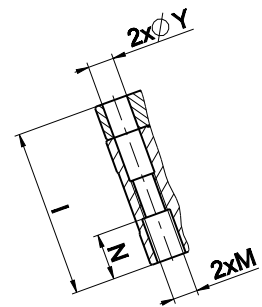
D-D  
2:1



K  
2:1



E-E



[www.TwinSpinGear.com](http://www.TwinSpinGear.com)

**Headquarters Address**

SPINEA, s.r.o.  
Okrajová 33, 080 05  
Prešov, Slovakia, EU

**Sales Department**

Tel: +421 51 770 01 56  
Fax: +421 51 748 20 80  
[info@spinea.com](mailto:info@spinea.com)

[www.spinea.com](http://www.spinea.com)

**Since 1994**